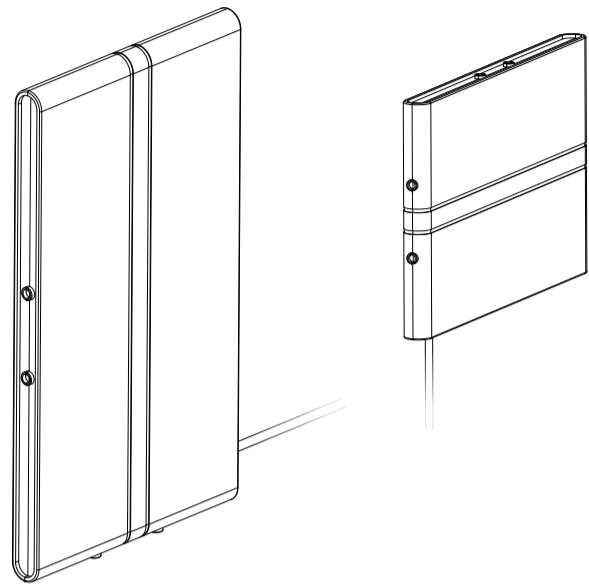


GEARit



Indoor/Outdoor High-Gain HDTV Antenna with Signal Booster

GI-ANT-3030-BK
User Manual

Table of Contents

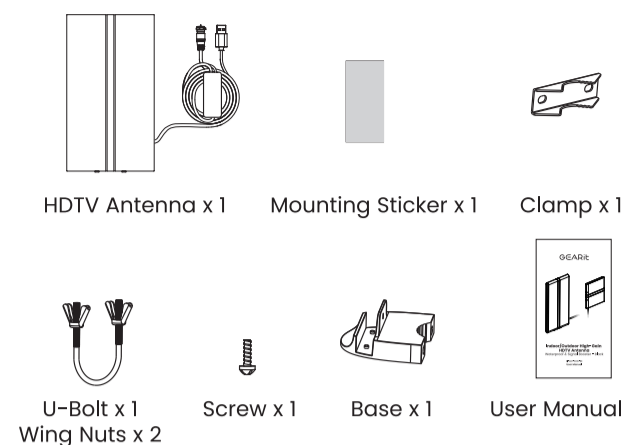
1. Package Contents	3
2. Antenna Connection	3-4
3. Tips for Using the Antenna	4
4. Antenna Installation	5-6
5. Scan for Channels	6
6. Product Specification	7
7. FAQs	7

Thank you for purchasing your new GEARit Indoor/Outdoor High-Gain HDTV Antenna. This user manual will help provide you with all the information needed to get started. Please read this manual carefully before using the product and reference it for later use. Enjoy your new product.

Live it. Experience it. GEARit.

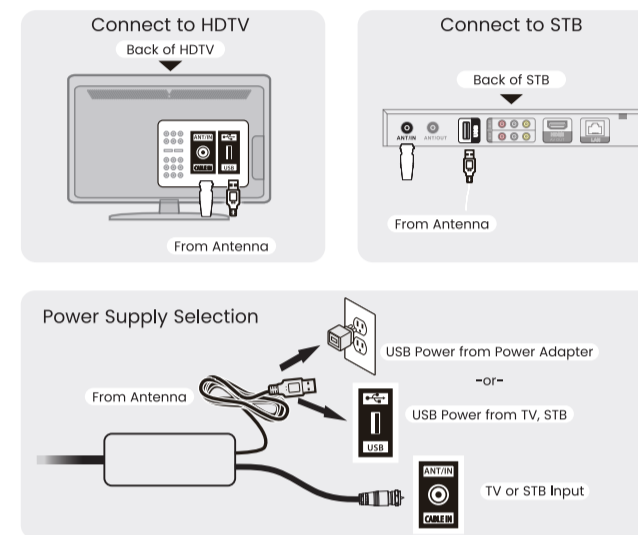
-02-

1. Package Contents



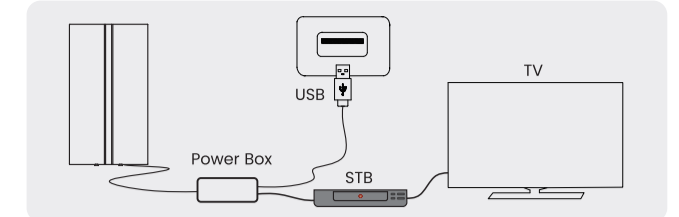
2. Antenna Connection

1. Connect the Coaxial Cable of the Amplifier to the ANT/IN or CABLE IN port on the back of the TV or STB.
2. Connect the USB Cable of the Amplifier to an open USB Port on the back of the TV, STB, or into a power adapter.

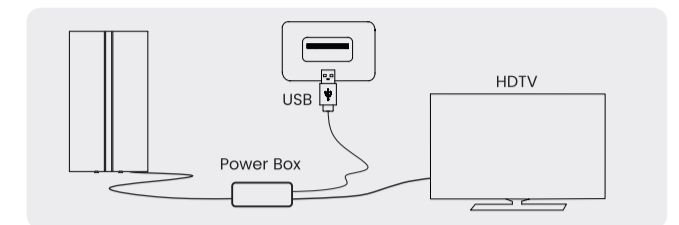


-03-

Connected Via Set-Top Box (STB)



Connected Via HDTV

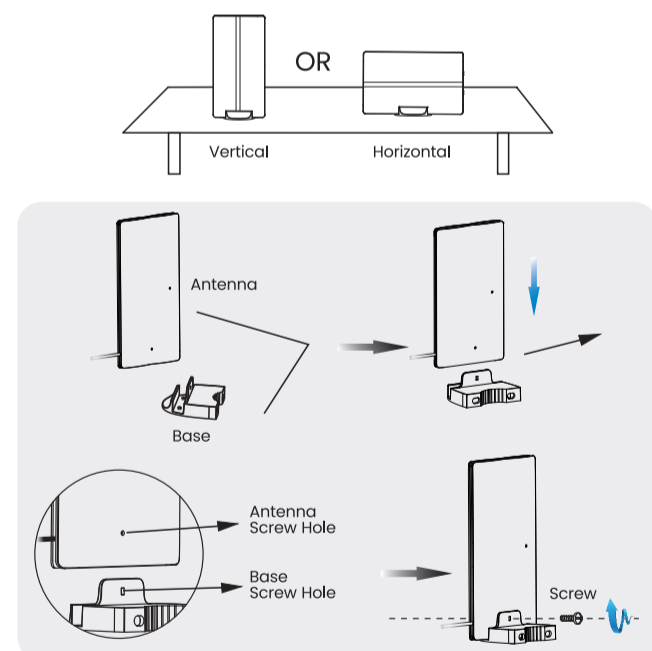


3. Tips for Using the Antenna

- Connect the antenna and the TV first, then find the best signal performance before finally mounting the antenna.
- Placing the antenna in a higher location and in an open space will typically result in better signals.
- Mounting the antenna high on a wall will have a better signal vs standing on a table.
- Before installation, please verify the following:
 - Confirm that your TV is a digital TV, with a digital signal input or wireless TV antenna port. If not, you will need a set-top box.
- Verify that the antenna is connected to the correct port of the TV or set-top box:
 - Some TV's have ports for wireless and wired antennas.
 - Some set-top boxes have input and output ports. Verify that you connect the antenna to the input port.

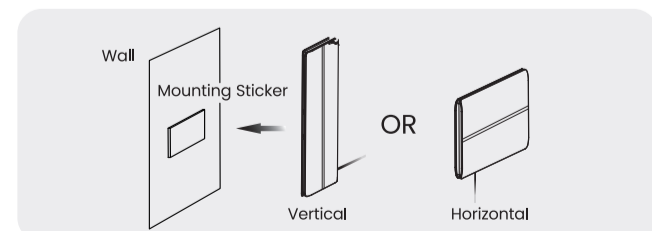
-04-

4. Antenna Installation



Option 1: Antenna and Base Mount

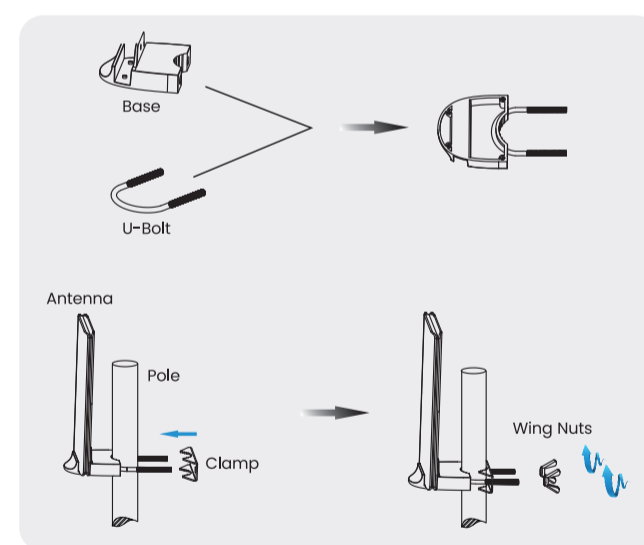
1. Place the antenna directly onto the base, as shown above. The antenna can be mounted vertically or horizontally.
2. Align the antenna screw hole with the base screw hole.
3. Secure by installing the screw, tightened clockwise.



Option 2: Antenna Wall Mount

1. Clean the mounting location thoroughly.
2. Place mounting sticker over surface.
3. Attach the Antenna onto mounting sticker by pressing firmly.

-05-



Option 3: Antenna and Base/U-Bolt Mount

1. Insert the U-Bolt into the base.
2. Place the antenna directly onto the base, as shown above. The antenna can be mounted vertically or horizontally.
3. Align the antenna screw hole with the base screw hole.
4. Secure by installing screw, tightened clockwise (as shown in Option 1).
5. Place the assembly onto a pole.
6. Insert the clamp and tighten to pole via the wing nuts.

5. Scan for Channels

1. In the TV's setup menu, set the mode to "Antenna/Cable" or "Air". Consult your TV's manual for detailed instructions.
2. While in the TV's setup menu, set the TV to scan for channels. This can sometimes be listed as "auto-program", "channel search", or "channel scan".
3. Once completed, you will now be able to view over-the-air channels.

-06-

6. Product Specification

Frequency Range	VHF 174-230MHz; UHF 470-862MHz
VSWR	≤2.0
Impedance	75Ω
Gain	28dBi
Connector	F Male or Customized
Power Supply	DC5V/500mA
Polarization	Horizontal / Vertical

7. FAQs

- Q: Why am I not receiving any channels?**
A: Verify connections from the antenna to your TV or receiver. Always re-scan for channels after making adjustments.
- Q: How can I receive more channels?**
A: Try to reposition the antenna and try varying angles. Always re-scan for channels after making adjustments.
- Q: Will all channels I receive be High Definition (HD)?**
A: Not all digital signals are High Definition. Make sure you are using a High Definition Television (HDTV) with a built-in ATSC tuner. When connecting the antenna to a third-party receiver, make sure it is capable of receiving HD signals.
- Q: Can I install the antenna behind my TV?**
A: Yes, but it may not be the ideal location for the antenna. The TV may block the signal, resulting in poor performance.
- Q: Are channel lineups available?**
A: No. The channels you receive depend on many complex factors, such as distance to the tower, the height of your location, surrounding trees or hills, etc.
- Q: Is this product like a freeview box?**
A: No, this is just an aerial that plugs into the back of your freeview-enabled TV, so you can watch TV without the need of running physical cables.
- Q: How many channels can I receive?**
A: The number of channels you can receive will be determined by what is being broadcasted in your area. Channel reception will vary by location to location.
Go to <https://www.fcc.gov/media/engineering/dtvmaps> to check for the DTV signals that are available at your location.

-07-

GEARit LIMITED WARRANTY

Warranty Coverage:

We stand behind our products with confidence, offering warranties designed to give you peace of mind and a worry-free experience. Our commitment covers most GEARit products with specific warranty periods based on product type such as cables, cases, wall chargers, and more. Either way, you're protected from defects in materials and workmanship.

• Consumer Electronics: 24 Months

30-Day Money-Back Guarantee:

You may return undamaged products within 30 days for a full refund. Products must include all accessories and original packaging. Shipping costs for non-quality-related returns are the responsibility of the buyer.

Replacement Warranty:

If a defect arises within the warranty period, GEARit will repair, replace, or issue a credit for the product. Repaired or replacement products are covered for 90 days or the remainder of the original warranty, whichever is longer.

Need Assistance?

For more information or to file a warranty claim, please visit GEARit's Warranty Support.

(<https://www.gearit.com/pages/warranty-information>)

(866) 686-1800

support@gearit.com

Mon – Fri: 9:00 AM – 5:30 PM (PST)

www.gearit.com

NOTE: This equipment has been tested and found to comply with the limits for a Class B digital device, pursuant to part 15 of the FCC Rules. These limits are designed to provide reasonable protection against harmful interference in a residential installation. This equipment generates, uses and can radiate radio frequency energy and, if not installed and used in accordance with the instructions, may cause harmful interference to radio communications. However, there is no guarantee that interference will not occur in a particular installation. If this equipment does cause harmful interference to radio or television reception, which can be determined by turning the equipment off and on, the user is encouraged to try to correct the interference by one or more of the following measures:

- Reorient or relocate the receiving antenna.
- Increase the separation between the equipment and receiver.
- Connect the equipment into an outlet on a circuit different from that to which the receiver is connected.
- Consult the dealer or an experienced radio/TV technician for help

Changes or modifications not expressly approved by the party responsible for compliance could void the user's operation of the equipment.

This device complies with Part 15 of the FCC Rules. Operation is subject to the following two conditions:
(1) This device may not cause harmful interference, and
(2) This device must accept any interference received, including interference that may cause undesired operation.

WARNING: This product can expose you to chemicals known to the State of California to cause cancer. For more information, go to www.P65Warnings.ca.gov.